

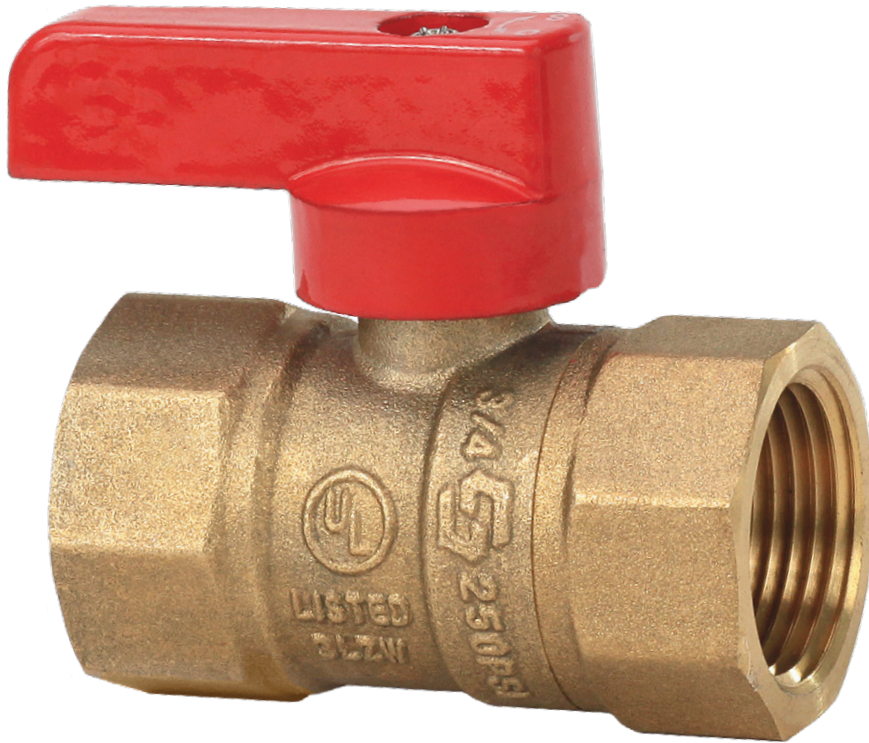


VALVES

**GAS BALL LEVER HANDLE -
BRASS - UL LISTED**

FEATURES & APPLICATIONS:

- Lever Handle Female x Female
- AGA Approved - UL Listed
- Gas Ball Valve for Natural Gas



*Not For Use With Potable Drinking Water Applications

TECHNICAL DATA:

- **WOG** = Rating indicates the maximum non-shock pressure at ambient temperatures at which the valve may be used.
- **CWP** = Cold working pressure

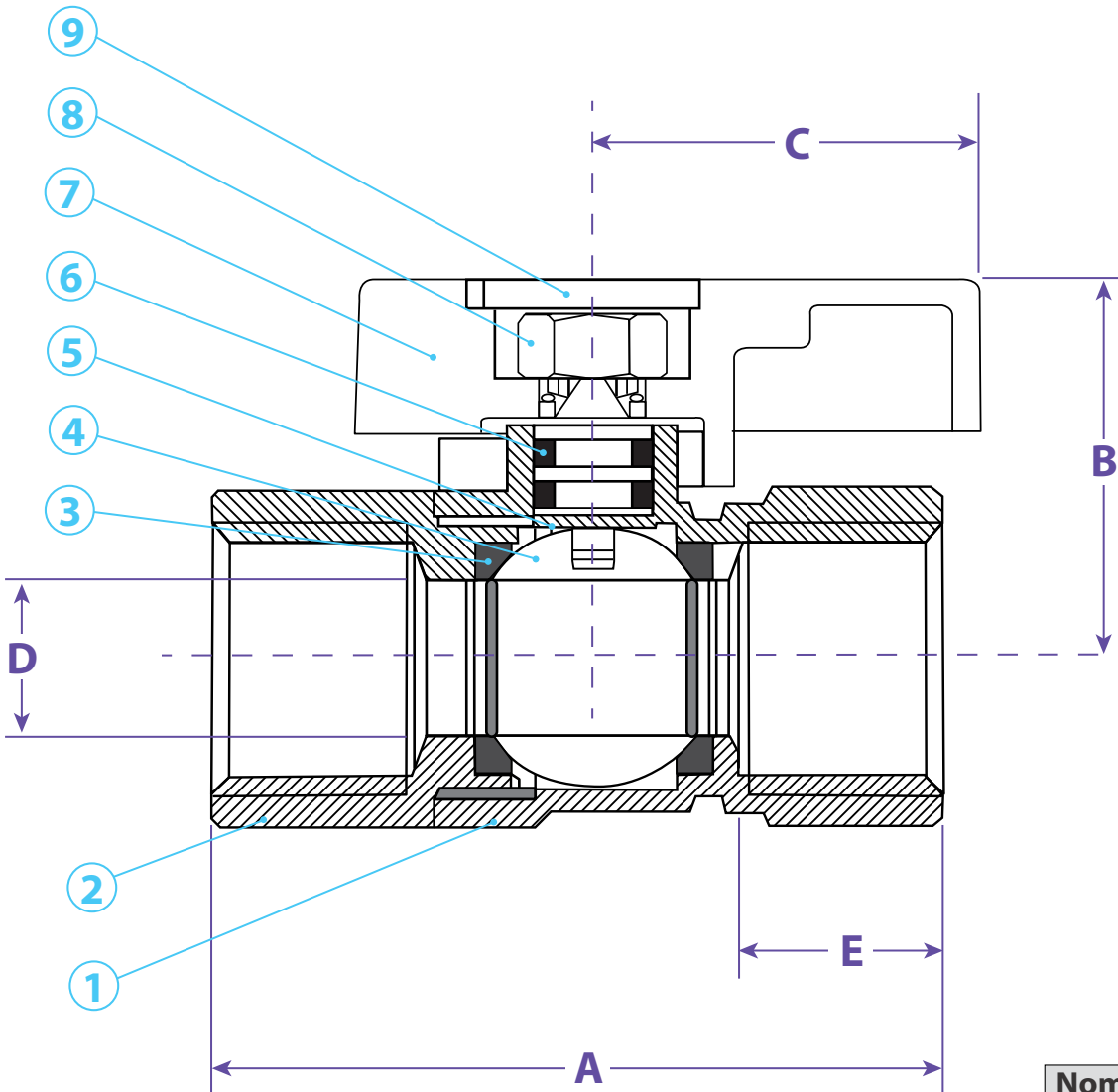
WOG: Water, Oil & Gas: This was an older, generic pressure rating call-out which has been largely replaced by CWP. In this designation, "GAS" refers to any non-flammable, compressible fluid in a gaseous state. It does not imply a product's suitability or third-party approval for use with flammable gases. Similarly, in this designation, "Oil" does not imply a product's third-party approval for use with any petroleum products.

BRASS	
Size	Part #
3/8"	AGA 038
1/2"	AGA 050
3/4"	AGA 075
1"	AGA 100



SEALFAST
THE SIMPLE SOLUTION

PIPE FITTINGS & VALVES



Dimensions							
Size	A	B	C	D	E	Wt.	Part #
3/8"	1.91	1.14	1.19	0.39	0.51	.31	AGA 038
1/2"	2.21	1.19	1.19	0.47	0.61	.36	AGA 050
3/4"	2.45	1.26	1.19	0.59	0.67	.47	AGA 075
1"	2.76	1.36	1.19	0.75	0.71	.91	AGA 100

Nomenclature & Material

No.	Description	Material
1	Body	Forged Brass ¹ CU>57%
2	End Piece	Forged Brass ¹ CU>57%
3	Seat	PTFE, Glass Reinforced
4	Ball	Brass, Chrome Plated
5	Stem	Brass
6	O-Ring	Nitrile
7	Handle	Aluminum, Painted Red
8	Nut	Steel, Plated
9	ID Plate	Aluminum

TITLE **BALL VALVE - GAS LEVER HANDLE**

DISCLAIMER

WOG: Water, Oil & Gas: This was an older, generic pressure rating call-out which has been largely replaced by CWP. In this designation, "GAS" refers to any non-flammable, compressible fluid in a gaseous state. It does not imply a product's suitability or third-party approval for use with flammable gases. Similarly, in this designation, "Oil" does not imply a product's third-party approval for use with any petroleum products.

MATERIAL

BRASS

DRAWING NOT TO SCALE

PART #

AGA...